



PURE ESSENTIAL OIL
WORKS™

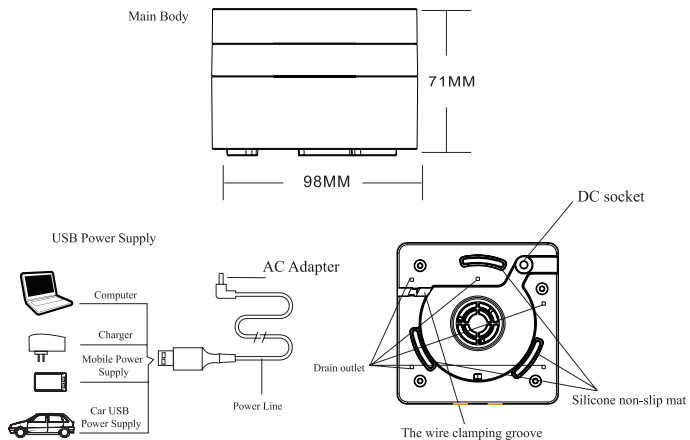
Natura LED Ultrasonic Aroma Diffuser



IMPORTANT INSTRUCTIONS — RETAIN FOR FUTURE USE

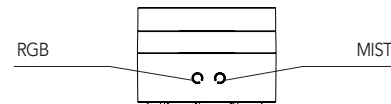
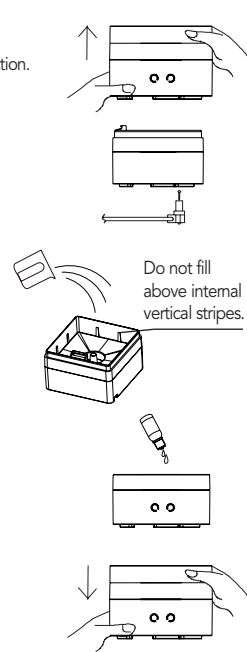
Congratulations on your purchase of the **Pure Essential Oil Works Natura LED Ultrasonic Aroma Diffuser**. Please read the instructions and safety tips before use. Your diffuser comes with a one-year limited warranty. If for any reason you need service, please call 800-520-6000.

This aroma diffuser uses ultrasonic technology to instantly vaporize water and essential oil to produce a cool, humid, fragrant mist.



How to Operate

1. Keep product upright, remove cover in a vertical direction.
2. Connect the AC adapter into the DC input jack at the base of diffuser by the wire clamping groove.
3. Carefully fill tank with water with the provided cup.
 - Do not exceed the 120ml max line on the water tank.
 - Use room temperature water.
 - Never fill tank with water during operation.
4. Add essential oil into the water (Advise 1-2 drops oil per 100 ml water). Use more or less oil depending on the level of intensity you prefer.
5. Re-install the cover. Do not operate without the cover.
6. Attach the USB adapter plug to USB power supply or to charger adapter and insert into power outlet.



7. MIST FUNCTION
 - Touch the "MIST" button to switch on and start in intermittent mode (runs 20 seconds, stops for 10 seconds, then repeats cycle). Unit will shut off after 8 hours.
 - Touch the button a second time to switch to continuous mode. Unit will shut off after 4 hours.
 - Touch the button a third time to shut off diffuser.
8. LIGHT FUNCTION
 - Touch the "RGB" button to switch light on and start in 7 cascading LED color mode.
 - Touch the button a second time fixes the color to one color or switches to another color.
 - Touch and hold the button about 3 seconds to turn off LED light. It will make a long beep when the light turns off. Other functions use a short beep.
9. If the water level inside the unit runs too low, the unit will automatically stop operating.
10. When not in use for an extended period, pour any remaining water from the reservoir before storing it in a cool and dry place.

Maintenance

For best operation and safety, please follow these steps if diffuser has been used for 5-6 times or 2-3 days:

1. Disconnect the adapter from the power supply. Remove cover.
2. Drain the remaining water from the drain outlet side. Do not drain the water from the air outlet side.
3. Remove the adapter from the main body.
4. Add a small amount of diluted mild kitchen detergent on a damp cloth to clean diffuser.
5. Use cup to fill water tank with clean water and operate for 30 minutes.
5. Drain solution from the drain outlet side of the tank.
5. If the mist outlet is dirty, remove the inner cover and clean it with a cotton swab.
6. Lightly use a cleaning cloth to dry all parts.



Never use other acids, enzymes, harsh detergents or benzene ethanol, as this may damage the diffuser or surface markings. Be sure to use a neutral detergent.

Attention

- The amount and intensity of the mist produced will vary, but this is not unusual and should not be considered as a fault. Factors that affect this include water type, humidity, temperature and air currents.
- Automatically powers off when water runs out.
- Only 100% natural essential oil can be used with this product. Use 1-2 drops per 100ml water at a time. Too much will clog the system and cause malfunction. Please clean unit as per the maintenance instructions, before changing to use a new type of essential oil.

Accidental Leakage

In the event of the unit being knocked over or tipped during use, please follow the steps below to avoid malfunction:

1. Unplug the unit and remove cover.
2. Pour out any remaining water from tank.
3. Shake the unit gently to drain any water inside the mechanism, and then allow drying for at least 24 hours.

Precautions

In order to avoid damage to the diffuser:

- Do not fill over 120ml "MAX" at any time.
- Do not switch on power when the tank is empty.
- Do not touch the ultrasonic vibration plate.
- Clean regularly as per maintenance instructions to avoid malfunction.
- Always unplug from power supply before maintenance.
- For hygiene reasons, after use, pour away remaining water from drain outlet side of tank and wipe with a clean dry cloth.
- Essential oil can corrode. In the event of a spill, wipe away with a soft cloth.
- Use measuring cup to add water into the tank. Do not fill water directly from tap.
- Do not let mist blow directly onto furniture, clothing, walls, etc.

- Keep away from direct sunlight and air conditioners or fans.
- Always keep on stable, flat surface. Do not place on carpet, duvet or unstable area.
- Keep away from electronic equipment, such as TV and audio equipment.
- Use tap water only. Do not use mineral water, sparkling water, etc.
- Never move product in use.
- Do not touch any part of the product with wet hands.
- Keep out of the reach of children and pets.
- Keep cord clear of pathways, and do not pull forcefully at any point.
- If smoke or burning smell is detected, unplug immediately.

Specifications

Size	3.75" Square x 2.75"H
Weight	About 0.37 lbs. (adapter not included)
Power supply	DC 5V
Power	4W
Mist production method	Ultrasonic vibration at approx. 3MHz
Water capacity	4 oz./120ml
LED Light	3 pieces
Materials	PP/ABS
Accessories	USB power cable, measuring cup and user manual



**PURE ESSENTIAL OIL
WORKS™**

Item #308668

pureessentialoilworks.com • 800.520.6000

tng worldwide • New Hudson, MI 48165

©2019 TNG • Made in China